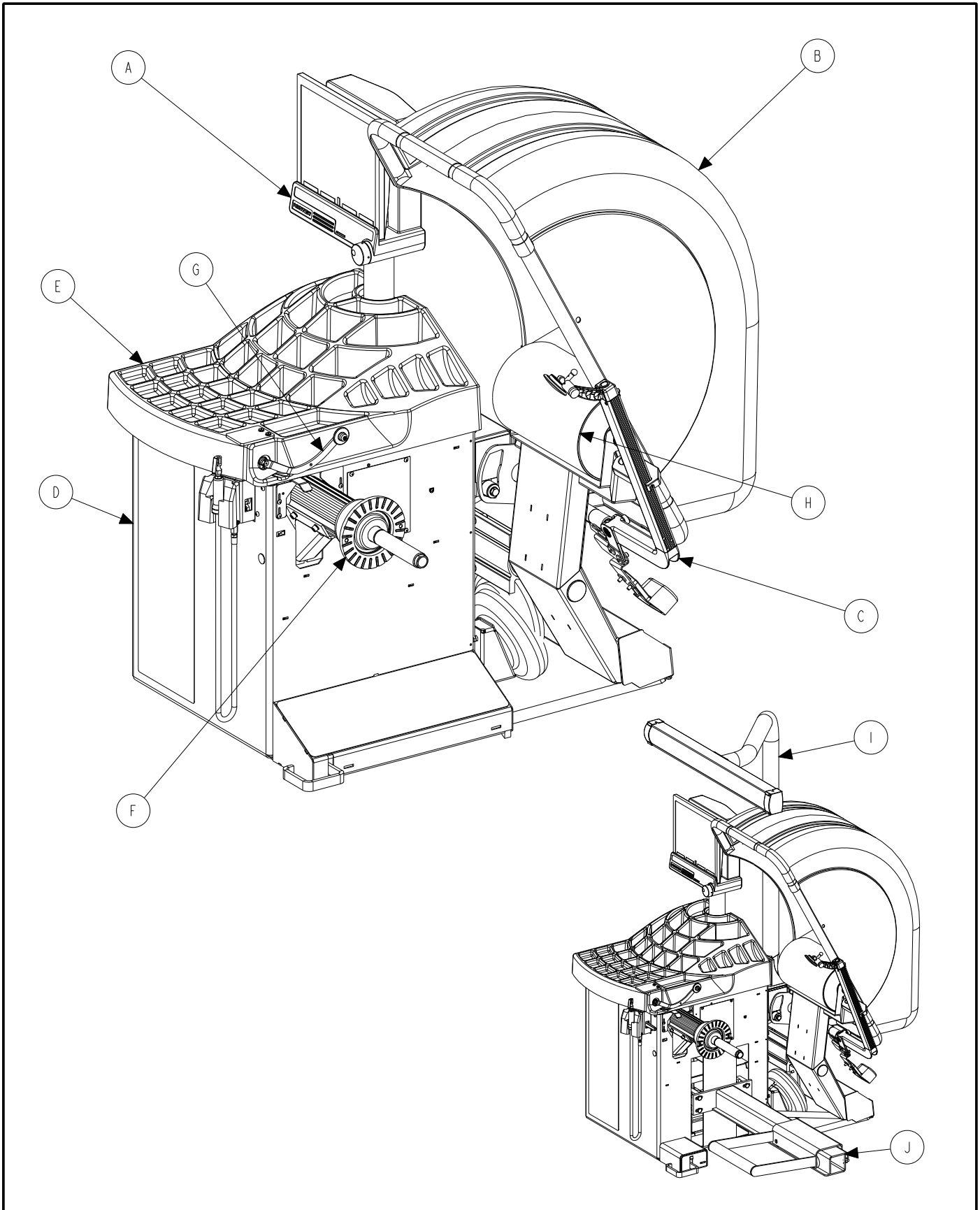


GSP9720 SERIES BALANCERS

© 2007-2010 Hunter Engineering Company

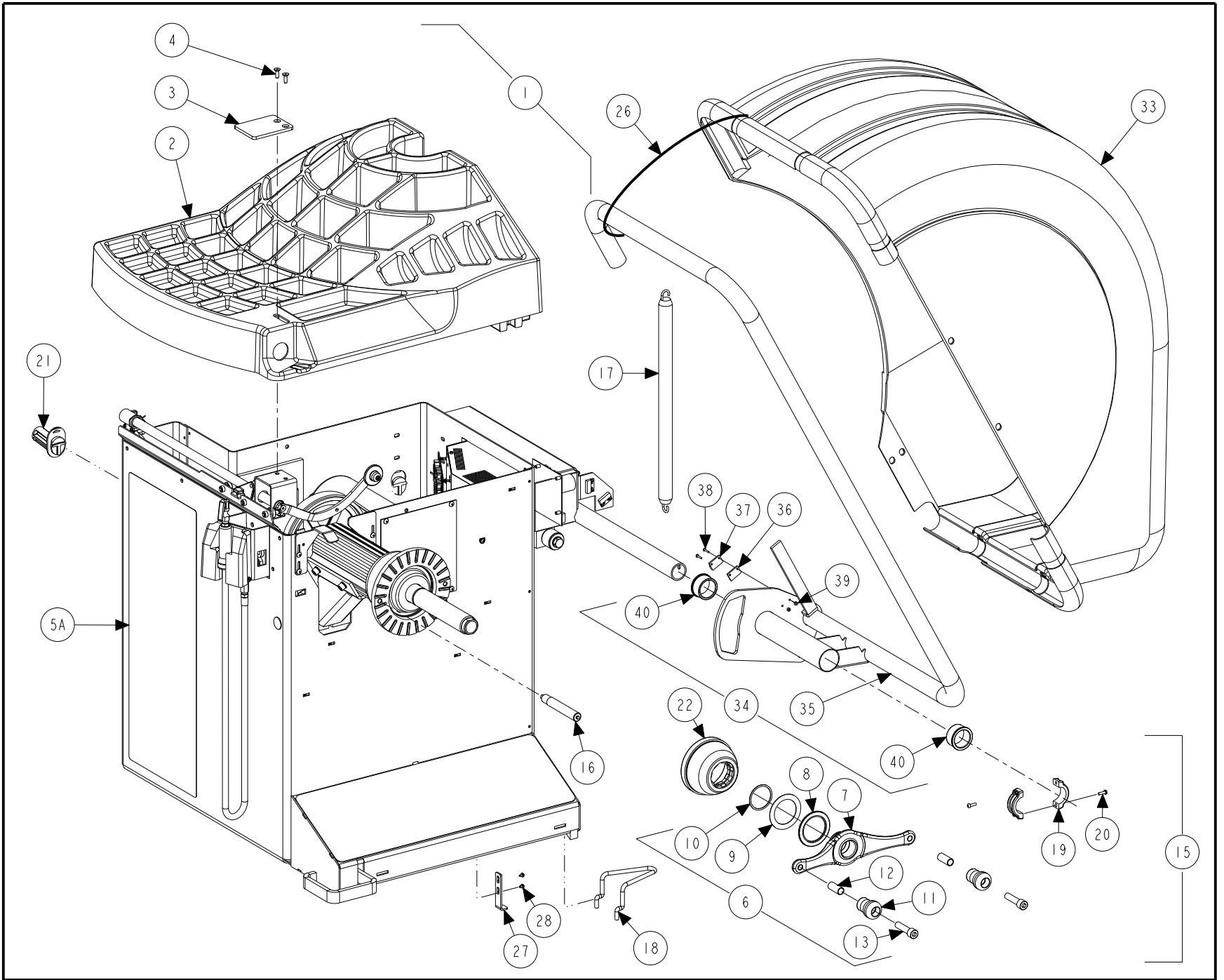


GSP9720 SERIES BALANCERS
REFER TO NEXT SHEET FOR PARTS DESCRIPTION LISTING

PARTS DESCRIPTION LISTING

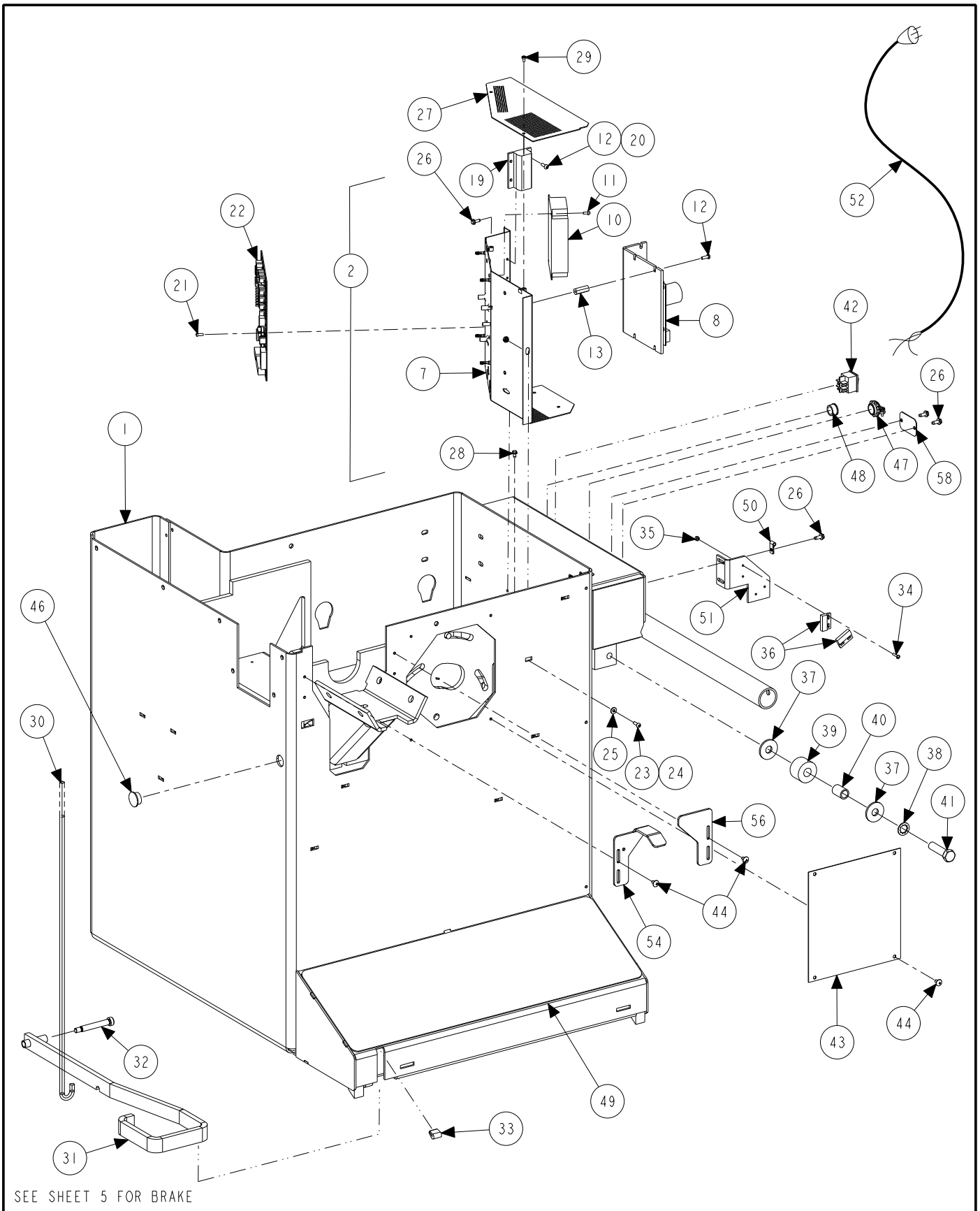
Index No.	Part Number	Description
A	11-1304-1	SUPPORT ASSEMBLY, GSP DISPLAY BALANCER (Sheet 7)
B	69-998-2	COVER, WHEEL GSP9700 (Sheet 3)
C	103-153-1	ARM, OUTER DATASET ASSEMBLY (Sheet 9)
D	72-398-1	BASE, GSP9722 BALANCER (Sheet 4)
E	69-1174-2	COVER, WEIGHT TRAY TRIM (Sheet 3)
F	105-542-1	HOUSING, SHAFT WITH LASER & ENCODER
OR	105-492-1	HOUSING, SPINDLE WITH LASER & ENCODER (Sheet 5) (For Auto-Clamp Only)
AND	97-587-1	SHAFT ASSEMBLY, OUTER 40 mm AUTO-CLAMP (Sheet 6) (For Auto-Clamp Only)
G	103-150-1	ARM ASSEMBLY, 9722 INNER DATASET (Sheet 8)
H	111-113-1	LOAD ROLLER ASSEMBLY (Sheet 10)
I	20-2166-1	KIT, TOP DEAD CENTER LASER SYSTEM (Sheet 12)
J	103-161-1	WHEEL LIFT MECHANISM (Sheet 11)

GSP9720 SERIES BALANCERS
REFER TO NEXT SHEET FOR PARTS DESCRIPTION LISTING



PARTS DESCRIPTION LISTING

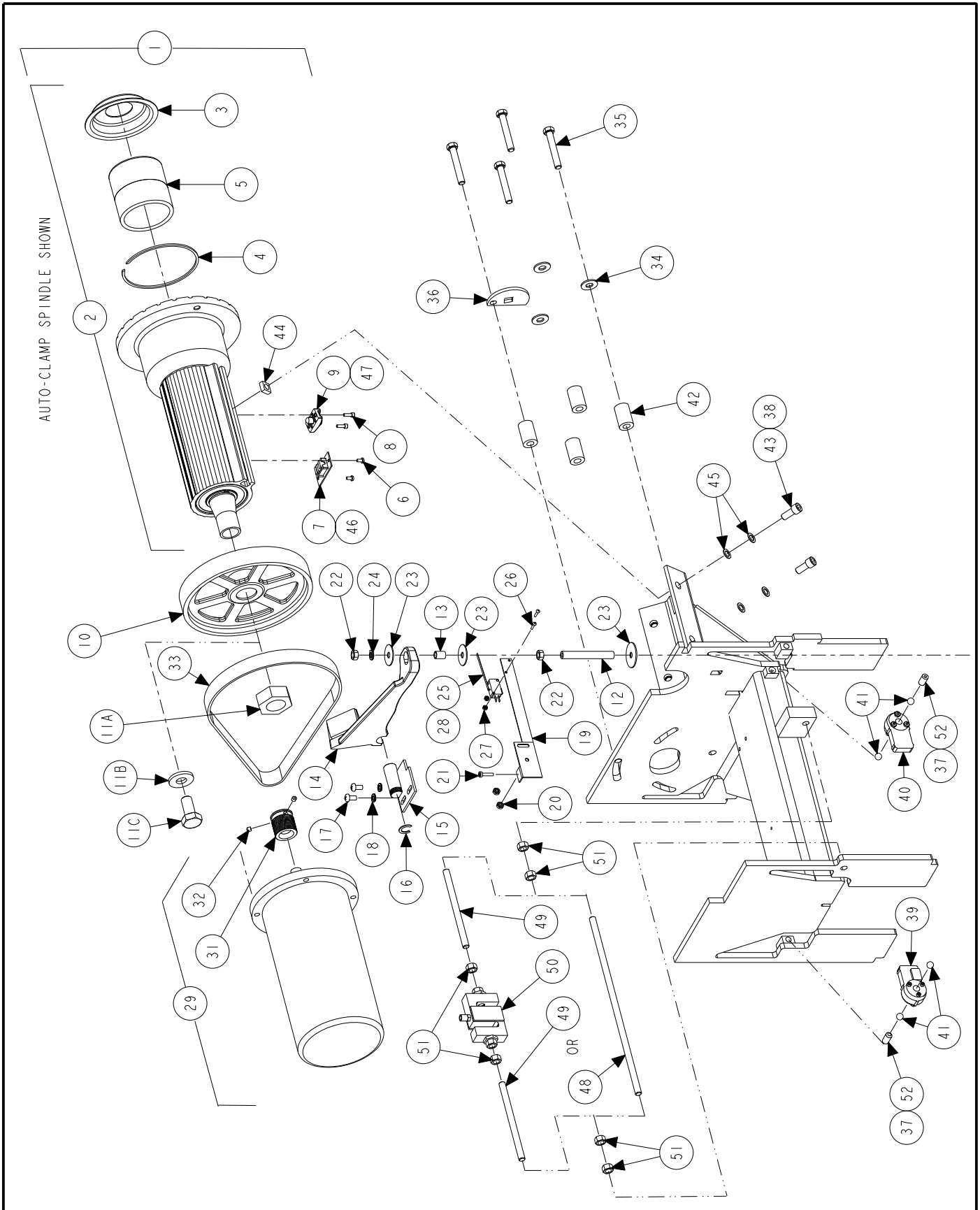
Index No.	Part Number	Description	Qty.
1	72-398-1	BASE, GSP9722 BALANCER (Consists Of:)	1
2	69-1174-2	COVER, WEIGHT TRAY TRIM	1
3	51-2168-2	PLATE, WEIGHT ANVIL 9200	1
4	75-68-2	FLAT HEAD SOCKET CAP SCREW 1/4-20 X .75 INCH	2
5A	128-1080-2	DECAL, DSP9700 ROAD FORCE	1
5B	128-1081-2	DECAL, STRAIGHTTRAK (LFM models only) (Not Illustrated)	1
6	76-433-1	NUT, FORGED WINGNUT WITH HANDLES (Consists Of:)	1
7	76-426-2	NUT, FORGED WINGNUT	1
8	130-145-2	BEARING, NEEDLE THRUST 55 mm INNER DIAMETER	1
9	77-255-2	WASHER, THRUST 55 mm INNER DIAMETER 1 MM THICK	1
10	112-87-2	SNAP RING, SMALLEY WS-200	1
11	142-148-2	HANDLE, WINGNUT	2
12	106-154-2	SLEEVE, WINGNUT HANDLE	2
13	74-206-2	SOCKET HEAD CAP SCREW 1/2-13 X 2 INCH, FULL-THREAD	2
13B	76-438-2	NUT, STEEL QUICKNUT (Not Illustrated)	1
14	NOT USED	NOT USED	1
15	20-2145-1	KIT, GSP BALANCER ACCESSORIES (Consists Of:)	1
16	65-72-2	WEIGHT, CALIBRATION	1
17	98-303-2	SPRING, HOOD	1
18	216-43-2	HOOK, LOWER SPRING MOUNT, GSP BALANCER	1
19	12-157-2	CLAMP HALF, 1.5 INCH SHAFT	2
20	75-35-2	ROUND HEAD MACHINE SCREW 10-32 X .63 INCH	2
21	233-44-2	POST, CONE HOOK PLASTIC	9
22	175-353-1	ADAPTOR, BALANCER CUP WITH RETAINER	1
23	46-320-2	SPACER, SPINDLE SHAFT (Not Illustrated)	1
24	106-82-2	SLEEVE, CLAMPING CUP (Not Illustrated)	1
25	223-68-1	RING, BALANCER PRESSURE WITH RETAINER (Not Illustrated)	1
26	94-35-2	TIE-WIRE, 15 INCH X 1/2 INCH	4
27	14-1109-005	BRACKET, BALANCER LEG	1
28	75-317-2	SCREW, THREAD ROLLING 1/4-20 X 5/8 INCH	2
29	221-589-2	TOOL, WEIGHT HAMMER / PLIERS (Not Illustrated)	1
30	221-658-2	TOOL, NYLON HAMMER HEAD (Not Illustrated)	1
31	221-659-2	TOOL, ADHESIVE WEIGHT REMOVER (Not Illustrated)	1
32	53-147-2	CAP, 1.5 INCH O.D. TUBE END (in place of outer dataset arm) (Not Illustrated)	1
33	69-998-2	COVER, WHEEL GSP9700	1
34	69-1191-1	COVER, 9722 HOOD ASSEMBLY (Consists Of:)	1
35	16-846-1-005	TUBE ASSEMBLY, 9722 WHEEL COVER	1
36	46-445	SPACER, MAGNET	1
37	60-24-2	MAGNET, REED SWITCH ACTUATOR	1
38	75-584-2	TRUSS HEAD MACHINE SCREW 4-40 X 5/8 INCH	2
39	76-366-2	NUT, LOCK 4-40 NYLON INSERT	2
40	130-141-2	BEARING, FLANGED 1.5 INCH X 1.0 INCH	2



GSP9720 SERIES BALANCERS
 REFER TO NEXT SHEET FOR PARTS DESCRIPTION LISTING

PARTS DESCRIPTION LISTING

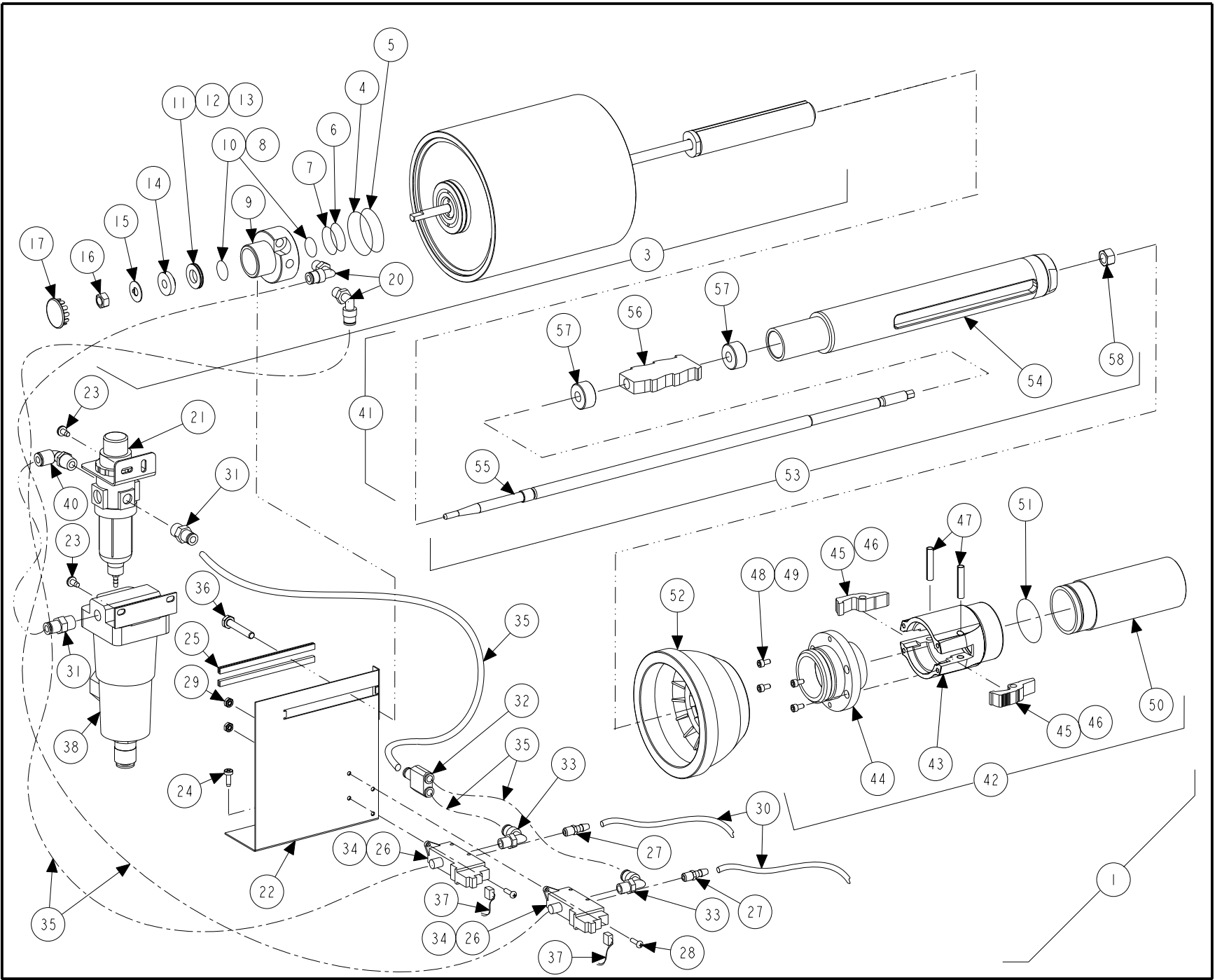
Index No.	Part Number	Description	Qty.
1	72-396-1-PPP	BASE, BALANCER WELDMENT PAINTED	1
2	232-207-1	ELECTRONIC BOX, DOMESTIC BALANCER POWER (Consists Of:)	1
3	37-561-1	WIRE ASSEMBLY, 9722 DAQ POWER (Not Illustrated)	1
4	37-562-1	WIRE ASSEMBLY, MOTOR (Not Illustrated)	1
5	38-1039-2	CABLE, 9722 DOMESTIC MONITOR & PRINTER (Not Illustrated)	1
6	38-1023-1	CABLE ASSEMBLY, 9200 POWER SUPPLY (Not Illustrated)	1
7	105-505-1	HOUSING ASSEMBLY, BALANCER POWER SUPPLY	1
8	232-232-2	DC MOTOR DRIVE, 230 VOLT / 8AMP	1
9	37-560-1	WIRE ASSEMBLY, 9722 POWER SUPPLY OUTPUT (Not Illustrated)	1
10	232-90-2	POWER SUPPLY, 25 WATT SWITCHING	1
11	75-162-2	ROUND HEAD MACHINE SCREW 6-32X.31 INCH	4
12	75-26-2	ROUND HEAD MACHINE SCREW 8-32X.50 INCH	8
13	46-594-2	STANDOFF	4
14	59-48-2	STRAIN RELIEF, HEYCO #1237 (Not Illustrated)	1
15	37-557-1	WIRE ASSEMBLY, POWER SUPPLY 9200 (Not Illustrated)	1
16	128-188-2	LABEL, 1/4 X 1 INCH (Not Illustrated)	2
17	59-61-2	STRAIN RELIEF, HEYCO SR 34-2 (Not Illustrated)	1
18	38-994-1	CABLE, DSP9600 GROUND (Not Illustrated)	1
19	81-82-1	RESISTOR ASSEMBLY, 75 OHM WITH LEADS	1
20	76-71-2	NUT, KEPS 8-32	4
21	75-24-2	ROUND HEAD MACHINE SCREW 6-32 X .38 INCH	1
22	45-1113-1	PCA,GSP9700 DATA AQUISITION	1
23	75-26-2	ROUND HEAD MACHINE SCREW 8-32 X .50 INCH	1
24	76-71-2	NUT KEPS 8-32	1
25	77-46-2	WASHER, FLAT 8	1
26	75-413-2	SCREW, SELF-TAPPING 10-32 X .50 INCH	5
27	69-1193	COVER, 9200 AND 9700 FIREBOX	1
28	75-682-2	SCREW, SELF-TAPPING 8-32 X 5/16 GREEN	1
29	75-102-2	PAN HEAD MACHINE SCREW 6-32 X .25 INCH	2
30	63-252-2	ROD, BRAKE ACTUATOR	1
31	164-79-1-005	LEVER ASSEMBLY, BRAKE FOOT PEDAL	1
32	74-351-2	BOLT, SHOULDER 3/8 X 2 1/4 INCH	1
33	64-112-2	PAD, EXTRUDED RUBBER	1/2 IN.
34	75-584-2	TRUSS HEAD MACHINE SCREW 4-40X 5/8 INCH	4
35	76-366-2	NUT, LOCK 4-40 NYLON INSERT	4
36	18-497-1	SWITCH, REED SWITCH ASSEMBLY	2
37	77-214-2	WASHER, FLAT 1/2 INCH SPECIAL	2
38	77-22-2	WASHER, LOCK 1/2 INCH INTERNAL TOOTH	1
39	228-25-2	STOP, 1.50 INCH OUTER DIAMETER RUBBER TUBE	1
40	113-174-2	BUSHING, STEEL .69 OUTER DIAMETER X .522 INCH INNER DIAMETER	1
41	74-345-2	HEX HEAD CAP SCREW 1/2-13 X 2 INCH, GRADE 5	1
42	18-270-2	SWITCH, DOUBLE-PULL SINGLE-THROW ROCKER	1
43	69-1028-PPP	COVER, SPINDLE DRIVE MOTOR	1
44	75-401-2	TRUSS HEAD SHEET METAL SCREW 10 X 1/2 INCH TYPE - AB	8
45	38-845-1	CABLE ASSEMBLY, POWER GSP9700 (Not Illustrated)	1
46	43-129-2	PLUG, HEYCO PRY OUT .812 INCH DIAMETER	2
47	12-27-2	CLAMP, CABLE 1/2 INCH	1
48	113-179-2	BUSHING	1
49	64-158-2	PAD, FOOT	1
50	12-145-2	CLAMP, CABLE 1/4 INCH DIAMETER	1
51	14-1116	BRACKET, 9722 HOOD SWITCH	1
52	38-845-1	CABLE ASSEMBLY, POWER GSP9700	1
53	38-1039-2	CABLE, 9722 DOMESTIC MONITOR & PRINTER (Not Illustrated)	1
54	14-1111-005	BRACKET, INNER DATASET	1
55	128-1111-2	DECAL, GSP CONTROL (Not Illustrated)	1
56	14-1121-005	BRACKET, SPINDLE GUARD	1
57	94-41-2	CLAMP, RELEASABLE, FIN BASE (Not Illustrated)	3
58	69-1233	COVER, TDC LASER PLUG	1



GSP9720 SEREIES BALANCERS
 REFER TO NEXT SHEET FOR PARTS DESCRIPTION LISTING

PARTS DESCRIPTION LISTING

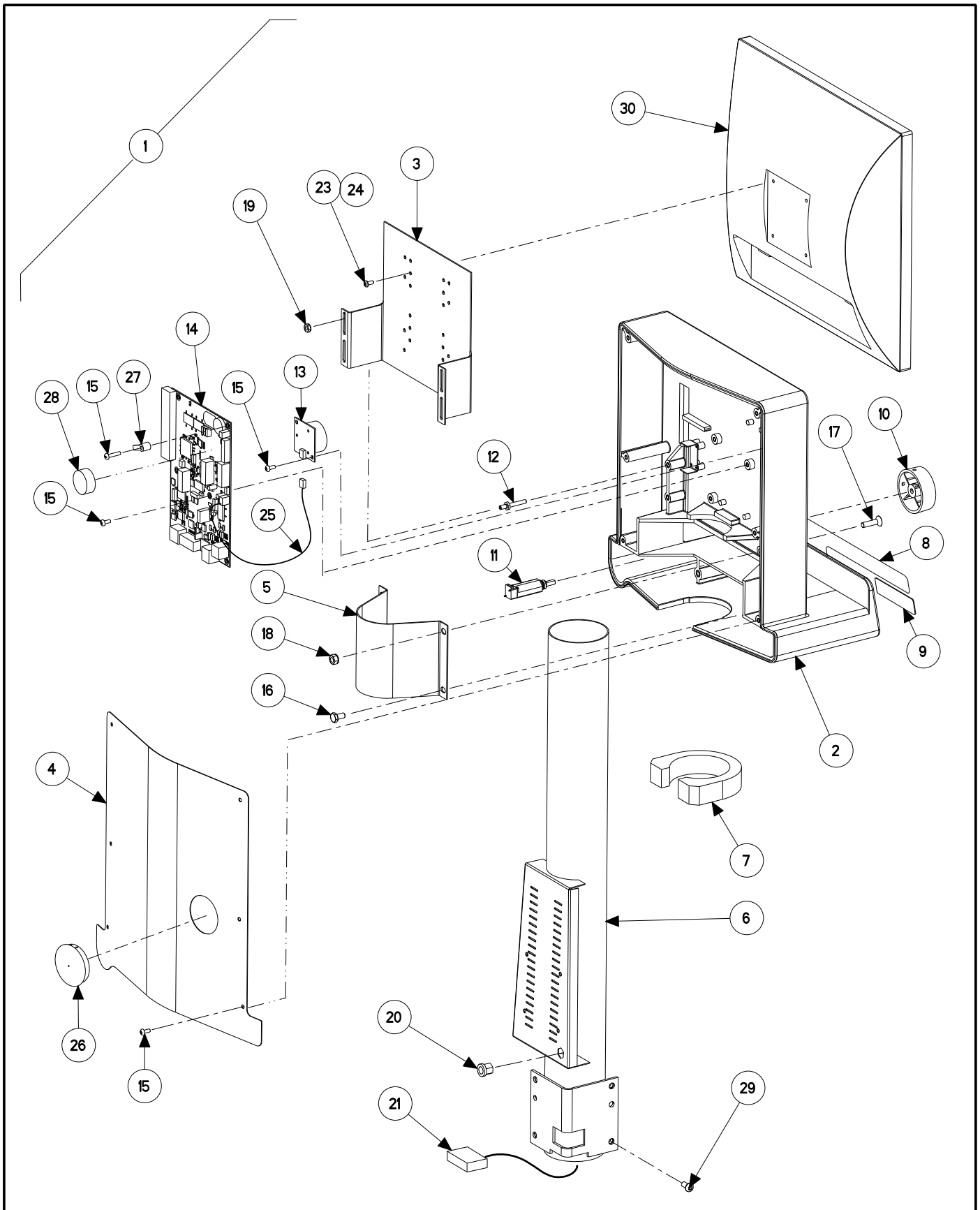
Index No.	Part Number	Description	Qty.
1	105-492-1	HOUSING, SPINDLE W/ LASER & ENCODER (For Auto-Clamp) (Consists Of:)	1
OR	105-542-1	HOUSING, SHAFT W/ LASER & ENC (NOT For Auto-Clamp) (Not Ill.) (Cons. Of:)	1
2	105-486-1	HOUSING, SPINDLE / DRIVE ASSEMBLY (For Auto-Clamp) (Includes:)	1
OR	105-541-1	HOUSING, SOLID SHAFT (NOT For Auto-Clamp) (Not Illustrated) (Includes:)	1
3	41-134-2	RETAINER, SPRING COVER	1
4	112-112-2	SNAP RING, INTERNAL 115 mm	1
5	98-381-2	SPRING, CONE	1
6	75-73-2	ROUND HEAD MACHINE SCREW 8-32 X .31 INCH	2
7	45-1159-1	BALANCER SPINDLE ENCODER	1
8	75-272-2	SOCKET HEAD CAP SCREW 8-32 X .50 INCH, FULL-THREAD	2
9	105-493-1	HOUSING, LASER	1
10	107-118-2	PULLEY, DRIVEN WITH BALANCE BAND	1
11A	76-470-2	NUT, AUTOCLAMP PULLEY NUT (For Auto-Clamp)	1
11B	77-239-2	WASHER, FLAT 5/8 INCH SPECIAL (NOT For Auto-Clamp)	1
11C	74-365-2	HEX HEAD CAP SCREW M16-2X35 mm GRADE 8.8 (NOT For Auto-Clamp)	1
12	98-416-2	SPRING, BRAKE RELEASE	1
13	106-155-2	SLEEVE, BRAKE ISOLATOR	1
14	164-89-1	LEVER, SPINDLE BRAKE ASSEMBLY	1
15	177-67-1-005	PIVOT, SPINDLE BRAKE ASSEMBLY	1
16	112-21-2	SNAP RING-#5103-75	1
17	75-176-2	ROUND HEAD MACHINE SCREW 1/4 - 20 X 1/2 INCH	2
18	77-71-2	WASHER, LOCK 1/4 INCH HELICAL SPRING	2
19	14-1132	BRACKET, FOOTBRAKE SWITCH	1
20	76-61-2	NUT, KEPS 10-32	2
21	75-414-2	PAN HEAD MACHINE SCREW 8-32 X 3/4 INCH	1
22	76-37-2	NUT, HEX 5/16-18	2
23	77-180-2	WASHER, FENDER 5/16 INCH	3
24	77-60-2	WASHR, LOCK 5/16 INCH HELICAL SPRING	1
25	18-454-2	SWITCH, MINI SINGLE-PULL DOUBLE-THROW 2.93 INCH LEVER	1
26	75-75-2	ROUND HEAD MACHINE SCREW 4-40 X 5/8 INCH	2
27	76-366-2	NUT, KEPS 4-40	2
28	38-1026-1	CABLE ASSEMBLY, SPINDLE LOC	1
29	129-232-1	MOTOR, DC, 9700 BALANCER (Includes:)	1
30	55-18-2	CORE, FERRITE (CYLINDRICAL) (Not Illustrated)	1
31	107-116-2	PULLEY, 9722	1
32	75-66-2	SOCKET SET SCREW 1/4-20 X 1/4 INCH CUP POINT	2
33	126-38-2	BELT, POLY-V DRIVE	1
34	77-66-2	WASHER, FLAT 3/8 TYPE A-W	3
35	74-68-2	HEX HEAD CAP SCREW 3/8-16 X 2.5 INCH	4
36	172-34-2	CAM, BELT TENSIONER	1
37	74-476-3	SOCKET SET SCREW 3/8-24 X 1 INCH SPECIAL WITH NYLON	2
38	FIELD PURCHASE	ADHESIVE, THREAD LOCKING (LOCTITE 222)	A/R
39	109-128-3	TRANSDUCER, LEFT FORCE ASSEMBLY	1
40	109-129-3	TRANSDUCER, RIGHT FORCE ASSEMBLY	1
41	130-60-2	BEARING, 13/32 INCH DIAMETER CERAMIC	4
42	46-422-2	SPACER, MOTOR	4
43	74-454-2	SOCKET HEAD CAP SCREW, 3/8-16 X 7/8 INCH	4
44	76-428-2	NUT, 3/8-16, .615 INCH SQUARE X .25 INCH	4
45	77-297-2	WASHER, FLAT 3/8 INCH	8
46	38-837-1	CABLE ASSEMBLY, SPINDLE ENCODER GSP BALANCER	1
47	37-559-1	WIRE ASSEMBLY, LASER SPINDLE HOUSING	1
48	63-257-2	ROD, THREADED 3/8-24 X 12.63 INCH	1
49	63-256-2	ROD-THREADED 3/8-24 X 5.5 INCH (LF MODELS ONLY)	2
50	109-100-1	TRANSDUCER-500# S-CELL WITH CONNECTIONS (LF MODELS ONLY)	1
51	76-297-2	NUT, HEX 3/8-24	4 or 6
52	FIELD PURCHASE	ADHESIVE, MEDIUM THREAD LOCKING (LOCTITE 242)	A/R



GSP9620 SERIES BALANCERS
 REFER TO NEXT SHEET FOR PARTS DESCRIPTION LISTING

PARTS DESCRIPTION LISTING

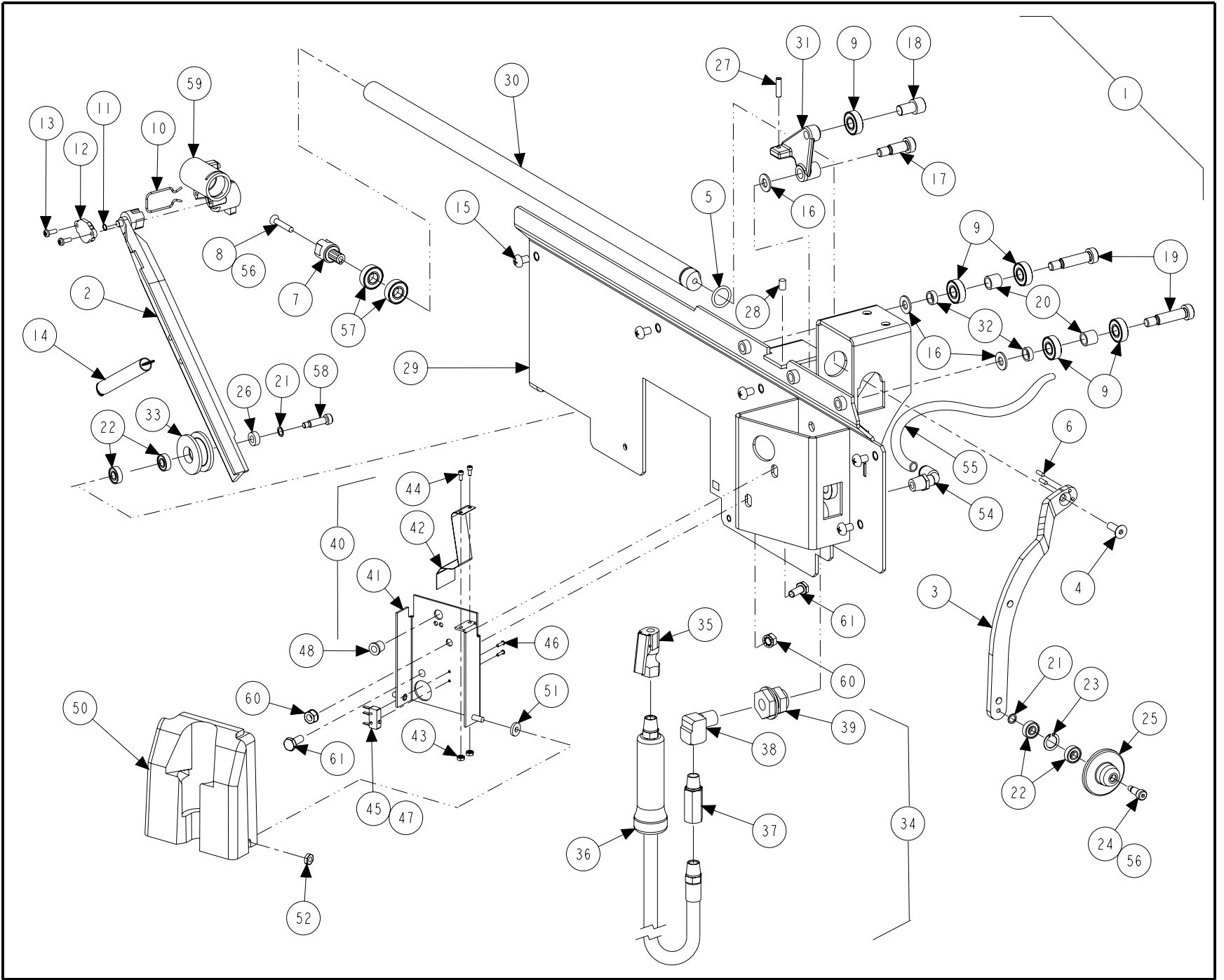
Index No.	Part Number	Description	Qty.
1	AUTOCLAMP	BASE, AUTO-CLAMP COMPONENTS (Consists Of:)	1
2	46-578-2	SPACER, CYLINDER AUTO-CLAMP	1
3	140-84-1	CYLINDER ASSEMBLY, AUTO-CLAMP III (Includes:)	1
4	124-170-2	SEAL, O RING AS568A-223	1
5	124-168-2	SEAL, ROTARY OUTER	1
6	124-169-2	SEAL, ROTARY INNER	1
7	124-171-2	SEAL, O RING AS568A-213	1
8	Field Purchase	LUBRICANT, 3 IN 1 OIL	A/R
9	178-45-1	COUPLING ASSEMBLY, ROTARY AUTOCLAMP (Includes:)	1
10	124-172-2	SEAL, O RING AS568A-011 VITON	2
11	77-341-2	WASHER, THRUST BEARING 1/2 ID	2
12	130-196-2	BEARING, ROLLER THRUST, 1/2 ID	1
13	Field Purchase	LUBRICANT, EP-2 GREASE	A/R
14	113-265-2	BUSHING, COUPLING AUTOCLAMP	1
15	77-340-2	WASHER, INTERNAL TAB 8MM DIN462	1
16	76-439-2	NUT, LOCK 5/16-18 CONICAL TOP	1
17	53-159-2	CAP, 1 INCH HOLE STEEL PLUG	1
18	NOT USED	NOT USED	-
19	NOT USED	NOT USED	-
20	145-324-2	FITTING, 1/8 NPT TO 1/4 INCH TUBE, 90	2
21	136-78-2	FILTER / REGULATOR, GSP9700	1
22	14-1108	BRACKET, AUTO-CLAMP CYLINDER	1
23	75-522-2	SCREW, SELF TAPPING 10-32 X .38 INCH	2
24	75-327-2	SCREW, SELF TAPPING 8-32 X .50 INCH	3
25	113-258-2	BUSHING, PUSH ON TRIM	8 1/4 in.
26	108-169-2	VALVE, PNEUMATIC SOLENOID	2
27	145-386-2	FITTING, BARBED 3/16 INCH INSIDE DIAMETER X 1/16 NPT	2
28	75-49-2	ROUND HEAD MACHINE SCREW 6-32 X 1/2 INCH	4
29	76-84-2	NUT, KEPS 6-32	4
30	16-844-2	TUBE, 5/16 INCH OUTSIDE DIAMETER, EXHAUST	24 in.
31	145-273-2	FITTING, 1/4 INCH HOSE X 1/4 NPT	1
32	145-325-2	FITTING, 1/4 INCH "Y"	1
33	145-324-2	FITTING, 1/8 NPT TO 1/4 INCH TUBE, 90	2
34	145-281-2	FITTING, 1/4 INCH HOSE X 1/8 NPT	2
35	16-843-2	TUBE, 1/4 INCH HOSE, FLEXABLE	40 in.
36	75-55-2	HEX HEAD CAP SCREW 1/4-20 x 1 1/2 INCH	1
37	38-948-1	CABLE, MANIFOLD ASSEMBLY	2
38	136-94-2	FILTER / REGULATOR, GSP AUTOCLAMP	1
39	137-96-1	HOSE ASSEMBLY, PNEUMATIC SUPPLY (Not Illustrated)	1
40	145-350-2	FITTING, 1/4 TUBE-1/4 NPT 90 ELBOW	1
41	20-2147-1	KIT, BALANCER AUTO-CLAMP (Includes:)	1
42	184-81-1	HUB ASSEMBLY, AUTO-CLAMP (Consists Of:)	1
43	184-83-2	HUB, CLAMP CUP (MACH)	1
44	217-61-2	COLLAR, AUTO-CLAMP CUP	1
45	144-105-2	LINK, PAWL AUTO-CLAMP	2
46	98-422-2	SPRING, TORSION AUTO-CLAMP	2
47	135-121-2	PIN, ROLL 1/4 INCH X 1 1/4 INCH	2
48	75-306-2	SOCKET HEAD CAP SCREW 8-32 X .31 INCH	4
49	Field purchase	LOCTITE # 271 OR PERMA BOND # HM128	A/R
50	106-156-2	SLEEVE, CLAMP	1
51	124-165-2	SEAL, O RING AS568A-030	1
52	175-353-1	ADAPTOR, BALANCER CUP WITH RETAINER	REF
53	97-587-1	SHAFT ASSEMBLY, OUTER 40 mm AUTO-CLAMP (Consists Of:)	1
54	97-586-2	SHAFT, OUTER AUTO-CLAMP	1
55	97-585-2	SHAFT, OUTER WITH HEX	1
56	99-132-2	RATCHET, AUTO-CLAMP	1
57	113-280-2	BUSHING, OUTER SHAFT	2
58	76-458-2	NUT, GRIP 3/8-24	2



GSP9620 SERIES BALANCERS
 REFER TO NEXT SHEET FOR PARTS DESCRIPTION LISTING

PARTS DESCRIPTION LISTING

Index No.	Part Number	Description	Qty.
1	11-1304-1	SUPPORT ASSEMBLY, GSP DISPLAY BALANCER (Consists Of:)	1
2	11-1171-2	SUPPORT, LCD - KEYPAD - BALANCER	1
3	14-1090-005	BRACKET, LCD SUPPORT	1
4	69-1186-005	COVER, DISPLAY REAR GSP	1
5	12-197-005	CLAMP, BALANCER SUPPORT TUBE	1
6	11-1303-1-005	SUPPORT, DISPLAY PAINTED	1
7	223-78-2	RING, FOAM BALANCER	1
8	18-481-2	SWITCH MEMBRANE LCD DISPLAY (includes flex cable)	1
9	24-56-2	NAMEPLATE, HUNTER	1
10	34-157-2	KNOB, 2.25 INCH DIAMETER	1
11	18-450-2	SWITCH, ROTARY ENCODER	1
12	75-665-2	SCREW, ADJUSTING BALANCER LCD	4
13	45-1149-1	PCA, ROCK HOPPER BEEPER	1
14	45-1111-1	PCA, ROCK HOPPER CONSOLE	1
15	75-32-2	ROUND HEAD MACHINE SCREW 8-32 X 3/8 INCH	14
16	75-23-2	HEX HEAD CAP SCREW 1/4-20 X .50 INCH, FULL-THREAD	2
17	75-214-2	FLAT HEAD SOCKET CAP SCREW 1/4-20 X 1 INCH	2
18	76-85-2	NUT, KEPS 1/4-20	2
19	76-61-2	NUT, KEPS 10-32	4
20	76-296-2	NUT, INSERT 3/8-16 HEX	1
21	38-1024-1	CABLE ASSEMBLY, GSP INTERCONNECT	1
22	194-24-2	BATTERY, COIN CELL 3 VOLTS	1
23	75-659-2	PAN HEAD MACHINE SCREW M4 X .7 X 12 mm	4
24	75-679-2	PAN HEAD MACHINE SCREW M4 X .7 X 16 mm	4
25	37-558-1	WIRE ASSEMBLY, BEEPER 9200	1
26	43-142-2	PLUG, 2 INCH HOLE HEYCO 2783	1
27	41-170-2	RETAINER, SECURITY KEY (NOT required, if 45-1111-1 is rev. J or greater.)	1
28	194-24-2	BATTERY, COIN CELL 3 VOLTS	1
29	75-481-2	SOCKET BUTTON HEAD CAP SCREW 1/4-20 X 1/2 INCH	4
30	227-89-2	DISPLAY, 17 INCH LCD	1



GSP9720 SERIES BALANCERS
 REFER TO NEXT SHEET FOR PARTS DESCRIPTION LISTING

PARTS DESCRIPTION LISTING

Index No.	Part Number	Description	Qty.
1	103-150-1	ARM ASSEMBLY, 9722 INNER DATASET (Consists Of:)	1
2	176-52-1	LOCATOR ASSEMBLY, MAGNET	1
3	103-146-2	ARM, INNER DATASET	1
4	75-68-2	FLAT HEAD SOCKET CAP SCREW 1/4-20X.75 INCH	1
5	124-102-2	SEAL, O RING # 2-208	1
6	135-406-2	PIN-ROLL 1/8 X 3/8 INCH	2
7	176-50-1	LOCATOR ASSEMBLY, MAGNET	1
8	75-667-2	SCREW, FLAT HEAD MACHINE SCREW 10-32 X 1.125 INCH	1
9	130-136-2	BEARING, BALL, 3/8 INNER DIAMETER X 7/8 INCH OUTER DIAMETER	5
10	98-415-2	SPRING, DATASET CLIP	1
11	77-323-2	WAHER-WAVE SPRING .242 X .194 INCH	1
12	53-153-2	CAP, INNER DATASET	1
13	75-359-2	PAN HEAD SHEET METAL SCREW 6 X 3/8 INCH TRILOBULAR	2
14	98-331-2	SPRING, EXTENSION .500 INCH OUTER DIAMETER	1
15	75-90-2	ROUND HEAD MACHINE SCREW 1/4-20 X 3/8 INCH	6
16	77-331-2	WASHER, .318 INNER DIAMETER X .73 OUTER DIAMETER X .057 INCH THICK	3
17	74-456-2	BOLT, SHOULDER 3/8 X 3/4 INCH	1
18	74-220-2	SOCKET HEAD CAP SCREW 3/8-16 X .63 INCH (Full-Thread)	1
19	74-366-2	BOLT, SHOULDER 3/8 X 1.25 INCH, GRADE 5	2
20	46-429-2	SPACER, ROLLER	2
21	77-140-2	WASHER, SPRING 1/4 INCH WAVE	2
22	130-142-2	BEARING, BALL 1/4 INNER DIAMETER X 5/8 INCH OUTER DIAMETER	4
23	112-86-2	SNAP RING, TRUARC 5008-62 ZD	1
24	75-633-2	SCREW, SHOULDER 1/4 X .439 INCH	1
25	111-102-2	ROLLER, INNER DATASET	1
26	46-583-2	SPACER, 1/4 INNER DIAMETER X 1/2 OUTER DIAMETER X 3/16 INCH LONG	1
27	75-601-2	SOCKET SET SCREW 10-24 X .75 INCH, OVAL POINT LOCK	1
28	98-333-2	SPRING, COMPRESSION .240 INCH OUTER DIAMETER	1
29	11-1202-1-005	SUPPORT ASSEMBLY, AUTO DATASET	1
30	97-540-2	SHAFT, INNER DATASET GSP9722	1
31	57-767-005	BAR, UPPER ROLLER	1
32	46-582-2	SPACER, .375 INNER DIAMETER X .173 INCH	2
33	111-123-2	ROLLER, LATERAL V	1
34	105-393-1	HOUSING ASSEMBLY, TIRE FILL (Consists Of:)	1
35	145-341-2	FITTING, AIR CHUCK LOCK-ON OPEN	1
36	137-100-1	HOSE ASSEMBLY, TIRE FILL	1
37	136-72-2	FILTER, INLINE 1/4 INCH MPT X 1/4 INCH FPT	1
38	145-241-2	FITTING, 1/4 INCH BRASS STREET ELBOW	1
39	145-224-2	COUPLING, BULKHEAD	1
40	14-936-1	BRACKET ASSEMBLY, TIRE FILL (Consists Of:)	1
41	14-1056-1	BRACKET, TIRE FILL WITH STUDS	1
42	103-102-2	ARM, SWITCH ACTUATOR	1
43	76-59-2	NUT, KEPS 4-40	2
44	75-303-2	SOCKET HEAD CAP SCREW 4-40 X .25 INCH (Full-Thread)	2
45	18-350-2	SWITCH, HANGER	1
46	48-77-2	RIVET, EYELET .086 X .344 INCH	2
47	37-481-1	WIRE ASSEMBLY, GSP9700 TIRE FILL	1
48	113-228-2	BUSHING, .25 INNER DIAMETER HEYCO 2030	1
49	94-11-2	TIE-CABLE (Not Illustrated)	1
50	69-991-2	COVER, TIRE FILL	1
51	46-485-2	SPACER, .194 INNER DIAMETER X .50 OUTER DIAMETER X .093 NYLON	2
52	76-263-2	NUT, LOCK 10-32 NYLON INSERT	2
53	Field Purchase	LOCTITE #545 THREAD SEALANT (Not Illustrated)	A/R
54	145-350-2	FITTING, 1/4 INCH HOSE X 1/4 INCH NPT, 90 ELBOW	1
55	16-423-2	TUBE, AIR .172 INNER DIAMETER	20
56	Field Purchase	ADHESIVE, THREAD LOCKING (Loctite #222 or Permabond #LM113)	AR
57	130-195-2	BEARING, BALL 3/8 INNER DIAMETER X 7/8 INCH OUTER DIAMETER	2
58	75-675-2	SCREW, SHOULDER 1/4 X 3/4 INCH	1
59	125-396-1	SENSOR, INNER DATASET	1
60	76-85-2	NUT, KEPS 1/4-20	2
61	75-333-2	HEX HEAD CAP SCREW 1/4-20X.63 INCH (Full-Thread)	2

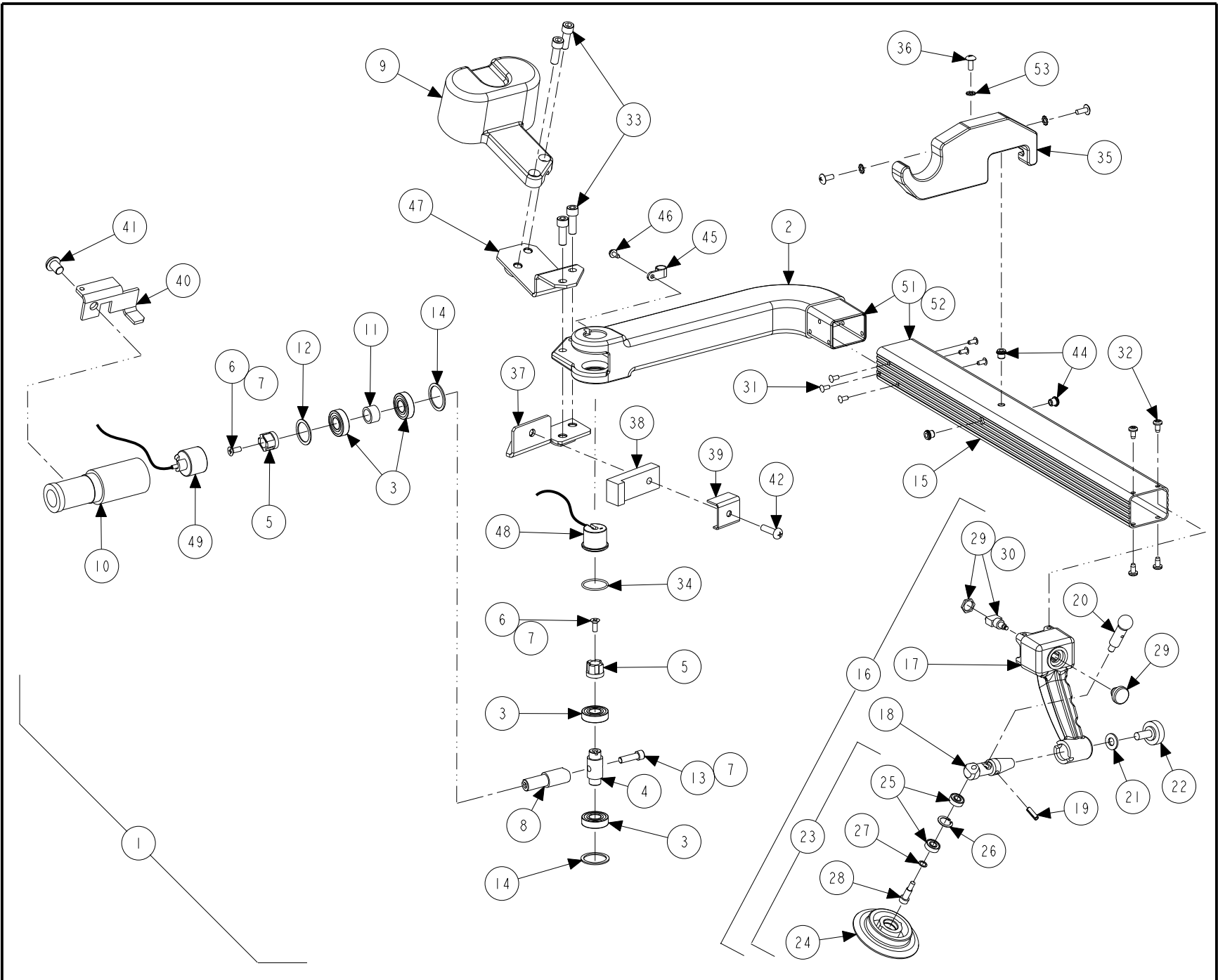
PPP-Paint Code Required

A/R-As Required

REF-Reference

HUNTER
Engineering Company

11250 HUNTER DRIVE BRIDGETON, MO 63044

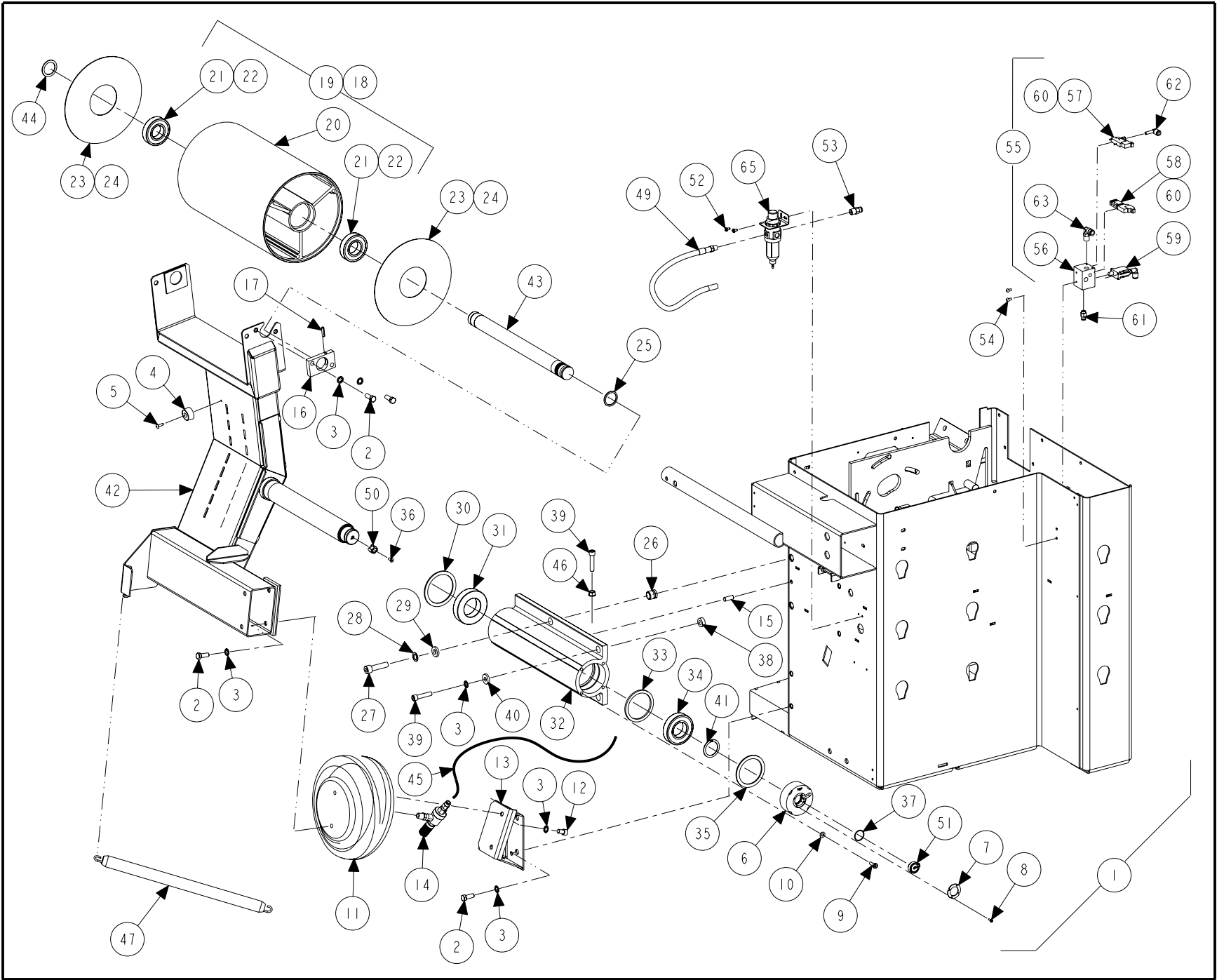


GSP9720 SERIES BALANCERS

REFER TO NEXT SHEET FOR PARTS DESCRIPTION LISTING

PARTS DESCRIPTION LISTING

Index No.	Part Number	Description	Qty.
1	103-153-1	ARM, OUTER DATASET ASSEMBLY (Consisting Of:)	1
2	105-475-2	HOUSING, DATASET ARM	1
3	130-172-2	BEARING, SEALED BALL	4
4	97-574-2	SHAFT, OUTER LATERAL (for 5/16 inch screw)	1
5	176-49-1	LOCATOR ASSEMBLY, MAGNET	2
6	75-508-2	FLAT HEAD MACHINE SCREW 10-32 X .50 INCH	2
7	Field Purchase	ADHESIVE, THREAD LOCKING LOCTITE #222 OR PERMABOND #LM113	A/R
8	97-573-2	SHAFT, RADIAL (for 5/16 inch screw)	1
9	65-85-2	WEIGHT, OUTER DATASET COUNTER	1
10	105-479-2	HOUSING, OUTER RADIAL BEARING	1
11	46-573-2	SPACER, OUTER DATASET	1
12	77-324-2	WASHER, WAVE SPRING 1.102 X .85 INCH	1
13	75-705-2	SOCKET HEAD CAP SCREW 5/16-18 X 1.00 INCH (Full-Thread)	1
14	112-124-2	SNAP RING, INTERNAL 1.125 INCH	2
15	103-152-2	ARM, OUTER DATASET	1
16	111-115-1	ROLLER / HANDLE ASSEMBLY, DATA SET	1
17	142-136-2	HANDLE, DATASET ARM	1
18	97-381-2	SHAFT, ROLLER/PIVOT	1
19	135-227-2	PIN, ROLL 3/16 X 5/8 INCH	1
20	104-105-2	GUIDE, RIM RUNOUT GAGE	1
21	77-20-2	WASHER, FLAT 5/16 INCH	1
22	34-129-2	KNOB, WITH 5/16 INCH SOCKET HEAD CAP SCREW	1
23	111-69-1	ROLLER ASSEMBLY, DATA SET	1
24	111-68-2	ROLLER, OUTER DATASET	1
25	130-142-2	BEARING, BALL 1/4 INNER DIAMETER X 5/8 INCH OUTER DIAMETER	2
26	112-86-2	SNAP RING, TRUARC 5008-62 ZD	1
27	77-140-2	WASHER, SPRING 1/4 INCH WAVE	1
28	75-521-2	SCREW, SHOULDER 1/4 X .50 INCH	1
29	18-494-1	SWITCH ASSEMBLY, OUTER DATASET ARM	1
30	Field Purchase	ADHESIVE, LOCTITE #242 OR PERMABOND #MM115	A/R
31	48-57-2	RIVET, BLIND 5/32 X 1/4 INCH	6
32	75-522-2	SCREW, STAP 10-32 X .38 INCH	4
33	74-376-2	SOCKET HEAD CAP SCREW, 5/16-18 X 7/8 INCH	4
34	124-117-2	O-RING .989 INNER DIAMETER X .070 INCH CS BUNA-N	1
35	228-72-2	STOP, OUTER DATASET	1
36	75-312-2	TRUSS HEAD MACHINE SCREW 10-32 X 1/2 INCH	3
37	11-1191-1	SUPPORT, DATASET WELDMENT	1
38	121-160-2	BLOCK, PIVOT STOP	1
39	12-200	CLAMP, BLOCK PIVOT STOP	1
40	228-55-005	STOP, DATASET PIVOT PAINTED	1
41	74-93-2	SOCKET BUTTON HEAD CAP SCREW 3/8-16 X .50 INCH (FULL-THREAD)	1
42	75-177-2	ROUND HEAD MACHINE SCREW 1/4-20 X .88 INCH	1
43	94-11-2	TIE-CABLE (Not Illustrated)	1
44	76-352-2	INSERT THREADED #10-32 STEEL	3
45	12-181-2	CLAMP, CABLE 3/8 INCH BLACK NYLON	2
46	75-330-2	SCREW, SELF-TAPPING 8-32 X 3/8 INCH	2
47	11-1220-1-005	SUPPORT ASSEMBLY, COUNTER WEIGHT	1
48	125-393-1	SENSOR, HALL OUTER DATASET LATERAL	1
49	125-394-1	SENSOR, HALL OUTER DATASET RADIAL	1
50	70-143-2	HARNES, SPIRAL WRAP .25 INCH OUTER DIAMETER BLACK (Not Illustrated)	2 IN
51	Field Purchase	ADHESIVE, LOCTITE DEPEND 330 NO-MIX LOC	A/R
52	Field Purchase	ADHESIVE, LOCTITE DEPEND 330 ACTIVATOR	A/R
53	77-351-2	WASHER #10 EXTERNAL TOOTH WASHER	3

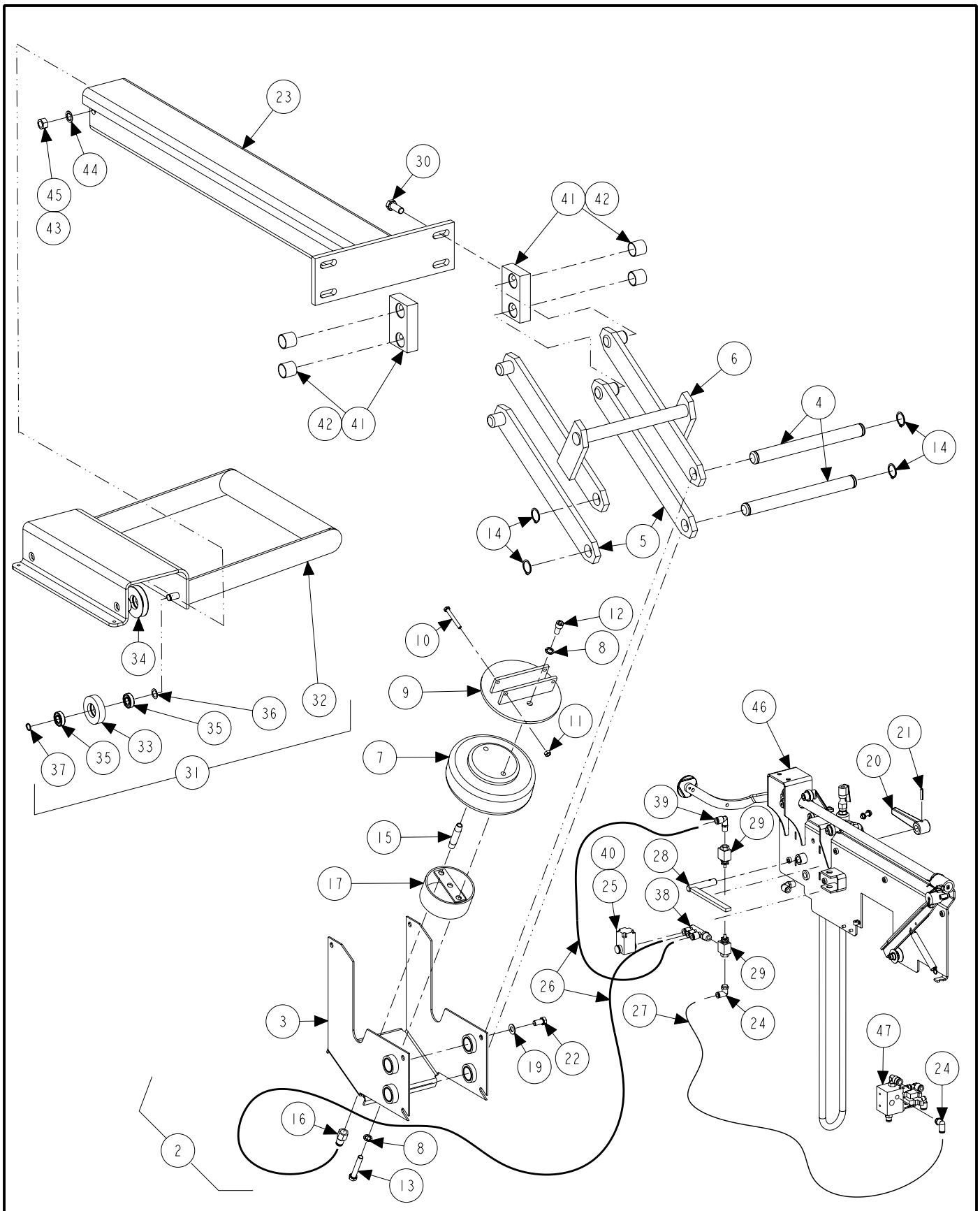


GSP9722 BALANCERS

REFER TO NEXT SHEET FOR PARTS DESCRIPTION LISTING

Index No.	Part Number	Description	Qty.
1	111-113-1	LOAD ROLLER ASSEMBLY (Consisting Of:)	1
2	74-105-2	HEX HEAD CAP SCREW 3/8-16 X 1.00 INCH, GR. 5	6
3	77-21-2	WASHER, LOCK 3/8 INCH INTERNAL TOOTH	10
4	62-21-2	FOOT, PLASTIC	1
5	75-476-2	TRUSS HEAD SHEET METAL SCREW 10 X 3/4 INCH	1
6	113-197-2	BUSHING, LRO SENSOR	1
7	41-112	RETAINER, INNER DATASET	1
8	75-515-2	SCREW, DRIVE 6 X .50 INCH	4
9	75-128-2	PAN HEAD MACHINE SCREW 1/4-20 X 3/4 INCH	4
10	77-67-2	WASHER, FLAT 1/4 INCH	4
11	98-283-2	SPRING, AIR ACTUATOR	1
12	74-220-2	SOCKET HEAD CAP SCREW 3/8-16 X .63 INCH	2
13	14-1162-1-005	BRACKET, AIRBAG	1
14	108-148-2	VALVE, QUICK EXHAUST WITH MUFFLER	1
15	135-333-2	PIN, DOWEL 3/8 X 1.00 INCH LONG	1
16	57-653-005	BAR, SHAFT ROLLER	1
17	135-53-2	PIN, ROLL 1/4 X 1 INCH	1
18	162-128-2	TAPE, NONSKID TREAD 24 INCH TRIMMED	1
19	111-90-3	ROLLER, LOADED RUNOUT (Consists Of:)	1
20	111-94-2	ROLLER, LOADED RUNOUT	1
21	130-169-2	BEARING 35 mm X72 mm	2
22	FIELD	LOCTITE RETAINING COMPOUND #609	A/R
23	69-1030	COVER, LOAD ROLLER END	2
24	FIELD	TAPE, 3M 4920 DOUBLE COATED FOAM	6
25	112-109-2	SNAP RING, EXTERNAL WAVE 1.375 INCH	1
26	74-420-2	BOLT, LEVELING .81-12 OD X .59 INCH ID	2
27	74-206-2	SOCKET HEAD CAP SCREW 1/2-13 X 2.00 INCH	2
28	77-22-2	WASHER, LOCK 1/2 INCH INTERNAL TOOTH	2
29	77-295-2	WASHER, .515 X 1.00 X .19 INCH THICK	2
30	112-110-2	SNAP RING INTERNAL, 90.5 MM DIA	1
31	130-170-2	BEARING, 50 mm ID X 90 mm OD	1
32	105-401-2	HOUSING, LOAD ROLLER BEARING	1
33	112-111-2	SNAP RING, SMALLEY WHW-312	1
34	130-137-2	BEARING, 40 mm ID X 80 mm OD	1

Index No.	Part Number	Description	Qty.
35	112-106-2	SNAP RING, TRUARC 5008-315	1
36	75-508-2	FLAT HEAD MACHINE SCREW 10-32X.50 INCH	1
37	124-117-2	O-RING .989 ID X .070 INCH CS BUNA-N	1
38	46-504-2	SPACER, 7/16 X 7/8 X 5/16 INCH THICK	2
39	74-353-2	SOCKET HEAD CAP SCREW 3/8-16 X 1.75 INCH	3
40	77-296-2	WASHER, .407 X 1.00 X .19 INCH THICK	2
41	112-79-2	SNAP RING, EXTERNAL, 1-9/16 INCH DIAMETER	1
42	103-158-1-005	ARM, LOADED RUNOUT	1
43	97-450-2	SHAFT, ROLLER	1
44	112-83-2	SNAP RING, TRUARC 5108-137	1
45	16-321-2	TUBE, 5/16 INCH OUTER DIAMETER	108
46	76-159-2	NUT, KEPS 3/8-16	1
47	98-303-2	SPRING, HOOD	1
48	128-603-2	DECAL, AIR PRESSURE LIMITS (Not Illustrated)	1
49	137-96-1	HOSE ASSEMBLY, PNEUMATIC SUPPLY	1
50	176-35-1	LOCATOR ASSEMBLY, MAGNET	1
51	125-395-3	SENSOR, HALL, LOAD ROLLER	1
52	75-522-2	SCREW, SELF-TAPPING 10-32 X .38 INCH	2
53	145-184-2	FITTING, 1/4 INCH NPT ADAPTOR	1
54	75-248-2	ROUND HEAD MACHINE SCREW 10-24 X 3/8 INCH	2
55	108-153-1	PNEUMATIC ASSEMBLY, GSP9700 (Consisting Of:)	1
56	185-21-2	MANIFOLD, PNEUMATIC, GSP9700	1
57	108-195-2	VALVE, 3-PORT MANIFOLD MOUNT	1
58	108-196-2	VALVE, 5 PORT MANIFOLD MOUNT	1
59	136-79-2	REGULATOR MANFOLD MOUNT & FITTING	1
60	38-1094-1	CABLE, MANIFOLD ASSEMBLY	2
61	145-216-2	FITTING, 5/16 TUBE X 1/8 INCH NPT ADAPTOR	1
62	145-357-2	FITTING, 1/4 INCH NPT PLUG IN ELBOW	1
63	145-183-2	FITTING, 1/4 INCH NPT ELBOW SWIVEL	1
64	FIELD	LOCTITE #545 THREAD SEALANT (Not Illus.)	A/R
65	136-78-2	FILTER / REGULATOR, GSP9700	1
66	FIELD	LOCTITE #545 THREAD SEALANT (Not Illus.)	A/R
67	74-43-2	SOCKET HEAD CAP SCREW 3/8-16 X 1" (Not Ill.)	4
68	113-179-2	BUSHING, BRAKE ACTUATOR ROD (Not Illus.)	1

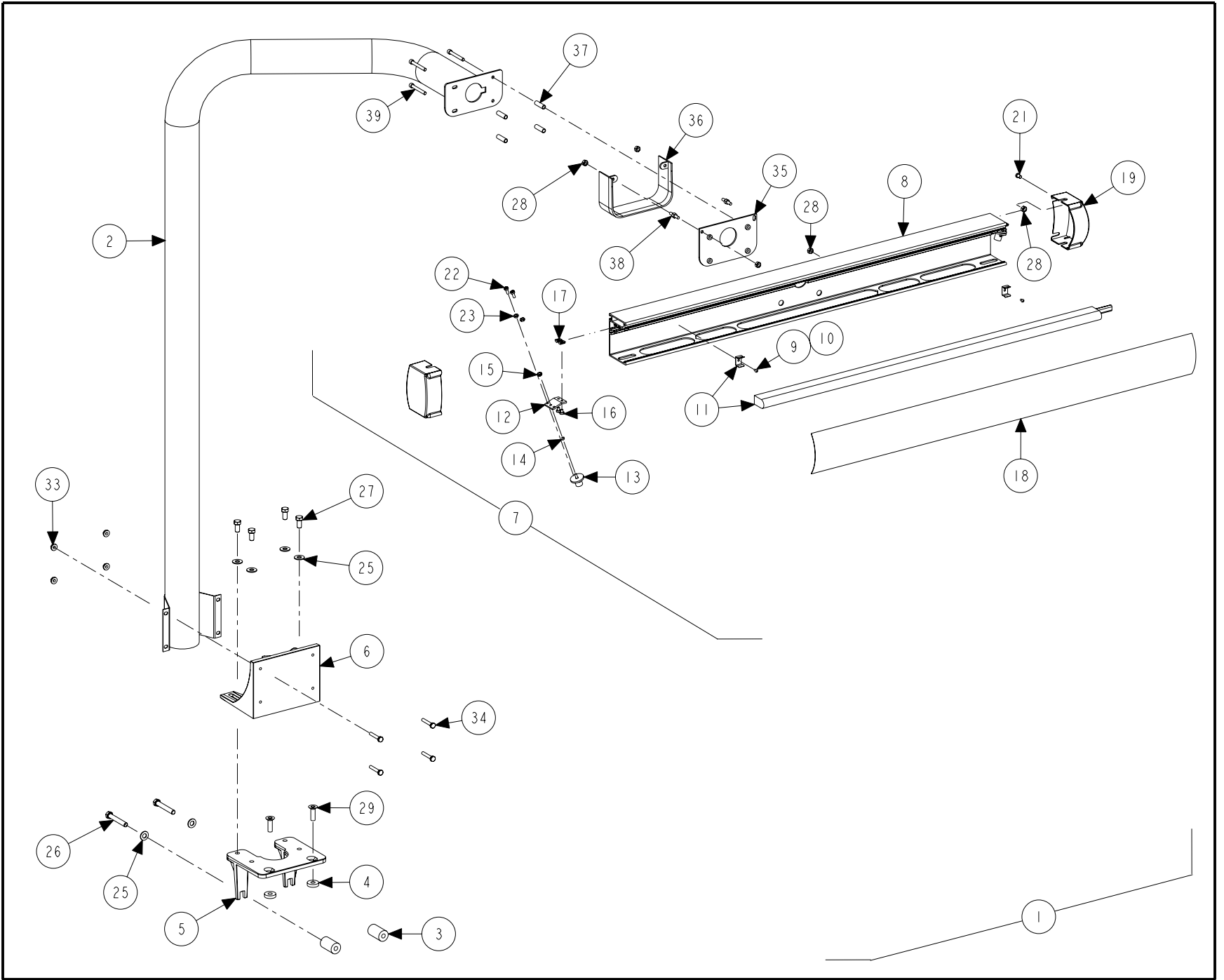


WHEEL LIFT FOR GSP9720 SERIES BALANCER
 REFER TO NEXT SHEET FOR PARTS DESCRIPTION LISTING

PARTS DESCRIPTION LISTING

Index No.	Part Number	Description	Qty.
1	72-401-1-PPP	BASE WELDMENT, WHEEL LIFT (Not Illustrated :)	1
2	103-161-1	WHEEL LIFT MECHANISM (Consists Of:)	1
3	11-1227-1-005	SUPPORT, WHEEL LIFT WITH BUSHINGS	1
4	97-459-2	SHAFT, WHEEL LIFT SUPPORT	2
5	103-119-1-005	ARM WITH PIN PAINTED	2
6	103-122-1-005	ARM ASSEMBLY PAINTED	1
7	98-388-2	AIRBAG	1
8	77-21-2	WASHER, LOCK 3/8 INCH INTERNAL TOOTH	4
9	11-1022-1-005	SUPPORT ASSEMBLY, CRADLE PAINTED	1
10	75-123-2	HEX HEAD CAP SCREW 1/4-20 X 2.00 INCH	2
11	76-368-2	NUT, LOCK 1/4-20 NYLON INSERT	2
12	74-428-2	SOCKET HEAD CAP SCREW .375-16 X .75 INCH	2
13	74-375-2	HEX HEAD CAP SCREW 3/8-16 X 2.50 INCH, GRADE 5	2
14	112-88-2	SNAP RING, TRUARC 5100-100	4
15	145-366-2	PIPE, NIPPLE 1/4 INCH NPT X 2.50 INCH LONG	1
16	145-365-2	FITTING, 1/4 INCH FPT 1/4 INCH PTC	1
17	161-47-1-005	PEDESTAL, WHEEL LIFT PAINTED	1
18	Field Purchase	LOCTITE #545 THREAD SEALANT (Not Illustrated)	A/R
19	77-75-2	WASHER, FLAT 3/8 INCH	6
20	142-149-2	HANDLE, JACK	1
21	135-61-2	PIN, SPLIT 3/16 X 7/8 INCH	1
22	74-59-2	HEX HEAD CAP SCREW 3/8-16X.75 INCH (FULL-THREAD)	6
23	118-670-1-005	BEAM ASSEMBLY, WHEEL LIFT	1
24	145-367-2	1/8 INCH NPT - 5/32 INCH PTC ELBOW	2
25	145-351-2	FITTING, NIPPLE REDUCR 5/16 - 1/4 INCH	1
26	16-423-2	TUBE, AIR .172 INCH INNER DIAMETER	6
27	16-450-2	TUBE, AIR 5/32 INCH OUTER DIAMETER	3.5
28	164-84-1	LEVER ASSEMBLY	1
29	108-75-2	VALVE, 2 WAY POPPET	2
30	74-11-2	HEX HEAD CAP SCREW 1/2-13 X 1.25 INCH, GRADE 5 (FULL-THREAD)	4
31	56-34-1	CARRIER, WHEEL LIFT (Consisting Of:)	1
32	54-821-1-005	CHANNEL ASSEMBLY, PAINTED	1
33	111-97-2	ROLLER, WHEEL LIFT FRONT	2
34	111-98-2	ROLLER, WHEEL LIFT REAR	2
35	TR50	BEARING	8
36	98-392-2	CURVED WASHER 1/2 INCH	4
37	112-115-2	SNAP RING, TRUARC #5100-50	4
38	145-372-2	FITTING, TRIPLE UNIVERSAL ELBOW	1
39	145-358-2	FITTING, 1/8 INCH NPT - 1/4 INCH PTC ELBOW	1
40	108-162-1	VALVE, TWO WAY ASSEMBLY.	1
41	121-241-1	BLOCK ASSEMBLY (Includes:)	2
42	130-174-2	BEARING, SLEEVE 1.00 X 1.00 INCH	2
43	74-37-2	HEX HEAD CAP SCREW 1/2-13 X 1.00 INCH (FULL-THREAD)	1
44	77-22-2	WASHER, LOCK 1/2 INCH INTERNAL TOOTH	1
45	76-25-2	NUT, HEX 1/2-13	1
46	103-150-1	ARM ASSEMBLY, 9722 INNER DATASET	REF.
47	108-153-1	PNEUMATIC ASSEMBLY, GSP9700	REF.

TOP DEAD CENTER LASER SYSTEM
REFER TO NEXT SHEET FOR PARTS DESCRIPTION LISTING



PARTS DESCRIPTION LISTING

Index No.	Part Number	Description	Qty.
1	20-2166-1	KIT, TOP DEAD CENTER LASER SYSTEM (Consists Of:)	1
2	16-912-1-005	TUBE ASSEMBLY, TDC LASER SUPPORT	1
3	46-598-2	SPACER, TDC LASER 92XX .25 INCH	2
4	46-599-2	SPACER, TDC LASER 92XX 1.7 INCH	2
5	11-1243-2	SUPPORT, TDC LASER BASE 9700	1
6	14-1129-2	BRACKET, TDC LASER BASE	1
7	105-531-1	HOUSING, TDC LASER HEADER ASSEMBLY	1
8	105-514-2	HOUSING, TDC LASER HEADER	1
9	76-12-2	NUT, HEX 6-32	2
10	75-16-2	ROUND HEAD MACHINE SCREW 6-32 X 1/4 INCH	2
11	35-147-2	LAMP, FLUORESCENT 24 WATT, TDC LASER	1
12	14-1130-2	BRACKET, TDC LASER MOUNT	2
13	105-530-1	HOUSING, TDC LASER ASSEMBLY	2
14	98-427-2	SPRING, TDC LASER ADJUSTMENT	2
15	76-61-2	NUT, KEPS 10-32	2
16	75-608-2	PAN HEAD MACHINE SCREW 10-32 X .31 INCH	4
17	76-382-2	NUT-T	4
18	190-192-2	SIGN, TDC LASER SYSTEM	1
19	69-1204-2	COVER, TDC LASER END CAP	2
20	Field Purchase	ADHESIVE, LOCTITE 242	A/R
21	75-535-2	LOW HEAD SOCKET CAP SCREW 1/4-20X.38 INCH	2
22	75-161-2	PAN HEAD MACHINE SCREW 10-32 X .50 INCH	4
23	76-11-2	NUT, HEX 10-32	4
24	128-1155-2	DECAL, LASER COMPLIANCE 2M (Not Illustrated)	1
25	77-65-2	WASHER, FLAT 3/8 INCH	6
26	74-16-2	HEX HEAD CAP SCREW 3/8-16X2.50 INCH (FULL-THREAD)	2
27	74-59-2	HEX HEAD CAP SCREW 3/8-16 X .75 INCH (FULL-THREAD)	4
28	76-13-2	NUT, HEX 1/4-20	6
29	74-461-2	BOLT, FLAT HEAD SOCKET CAP SCREW 3/8-16 X 1/4 INCH	2
30	37-568-1	WIRE ASSEMBLY, TDC LASER LIGHT (Not Illustrated)	1
31	36-59-2	RECEPTACLE, IEC 320 FEMALE (Not Illustrated)	1
32	76-159-2	NUT, KEPS 3/8 – 16 (Not Illustrated)	4
33	76-367-2	NUT, FLANGE 1/4 - 20	4
34	75-703-2	HEX HEAD CAP SCREW 1/4-20 X 1.5 INCH GRADE 8	4
35	51-2332-1-005	PLATE, TDC HAMMERHEAD MOUNT ASSEMBLY	1
36	69-1271-2	COVER, TDC ADJUSTMENT	1
37	98-443-2	SPRING, TDC LASER ADJUSTMENT	4
38	134-141-2	STUD, 1/4-20 DOUBLE ENDED, BRASS	2
39	75-309-2	SOCKET HEAD CAP SCREW 1/4-20 X 2.00 INCH	4